

Benefits

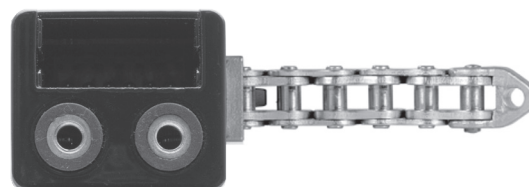
- Ideal for smart buildings; integrate with building and home automation systems.
- Certified for Smoke & Heat Extraction (SHE)

Applications

Automated operation of awning windows, hopper windows, casement windows, curtain wall vents, and skylights.

Features

- Push/Pull force: 500N (112 lbf)
- Drive chain with rigid backing, bends in the direction of the hinge
- Perfectly suited for profile integrated and surface mounted installation; White (RAL9006) or any custom RAL
- 2.5m connection cable with interconnect plug. Connection available on both ends of the actuator
- Available as 19.70" (500mm) chain operator
- Programmable drive functions and different drive parameters
- Active closing edge protection (time controlled reversing when an obstacle is detected)
- Mounting: Mounting brackets available for all profiles
- 5-year manufacturer's warranty. Requires reading AFI Install Guide before purchase, and confirmation of project and installation specs by licensed electrical contractor



Programmable Features

Option of chain stroke programmings via magnet.

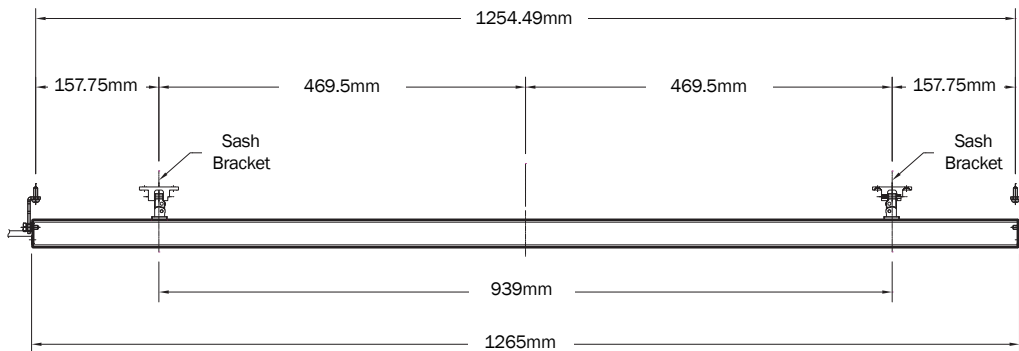
Chain stroke	Up to 500mm
Speed adjustment	Programmable from 13mm/sec down to 6.7mm/sec for quiet operation
Speed reduction	For the last seconds of closing, as a safety precaution
Seal relief adjustment	Between 0-20mm to protect sash at closed position
Feedback Signal	OPEN or CLOSE can be selected

CDC TWIN

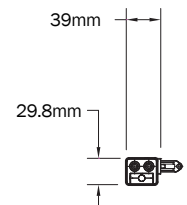
Part #	Color	Description	Stroke (and force)
26.103.20	White	Dual Chain Actuator	Up to 500mm (500N)
26.103.00		Custom Build	

Specifications

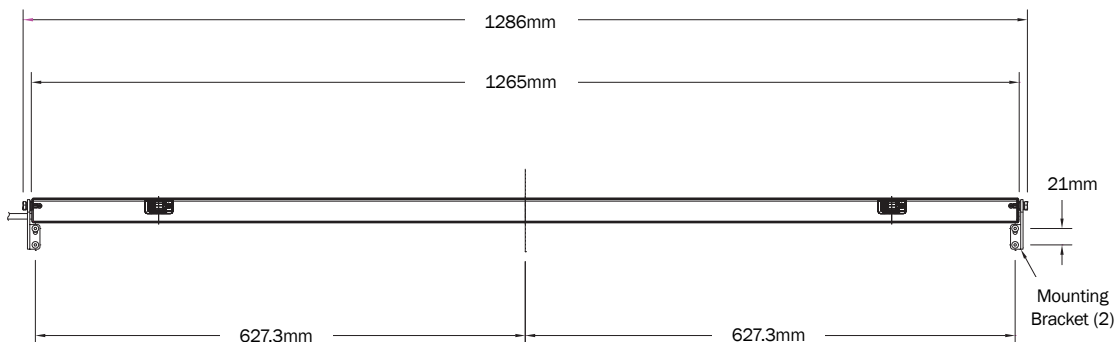
Supply Voltage	24VDC (-15% / +50%)
Nom. Current Draw	Approx 1.6A at 500N load
Limit stop	(Open): Built in limit switch (Closed) Integrated electronic power cut-off
Chain stroke (approx)	500mm (19.70")
Push force (Max)	500N (112 lbf +/- 3%)
Pull force (Max)	500N (112 lbf +/- 3%)
Chain speed	6.7mm/sec 13.6mm/sec (SHEV emergency opening)
Dimensions	1265mm L x 39mm D x 30mm H (49 ⁷ / ₈ " x 1 ⁵ / ₈ " x 1 ¹ / ₈ ")
Run/Rest cycle	For every 60 sec running (on), must then rest (off) for 120 sec
Ambient Oper Temp	-10 °C to +60 °C (14 °F to 140 °F)
Listing	UL Recognized
Protection class	IP32
Colors	Powder-coated White (RAL9006), custom RAL finishes available
Opening mechanism	See chain spacing below



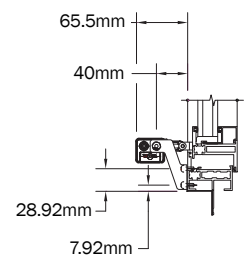
TOP VIEW



SIDE VIEW



FRONT VIEW



SAMPLE SHOWN WITH WINDOW PROFILE BY OTHERS